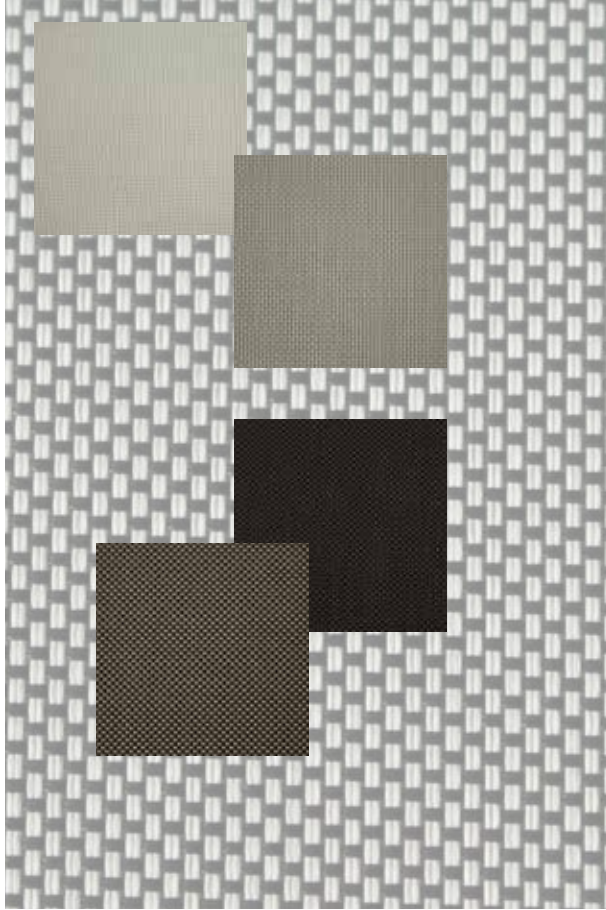


# N-VISION



Composition: 30% Polyester / 70% PVC

Width: 2500mm / 3000mm\*

Openness Factor: 5%

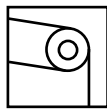
Weight: 410gsm

Thickness: 0.55mm +/- 5%

Colour Fastness: 7-8

Fire Classification: AS 1530.3 / NFPA701 / BS5867

Colours variations occur between digital and actual fabric colours.  
Request fabric samples prior to any purchase for colour clarity.



**Roller**

Colour Range Represented on Following Page

**A.W.S**

All Window Solutions Pty Ltd

# N-VISION



Snow\*



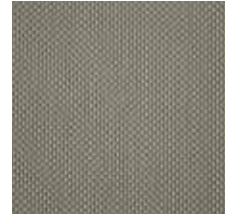
Beige\*



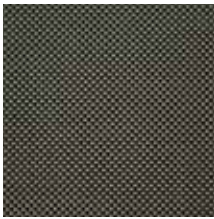
Desert\*



Linen\*



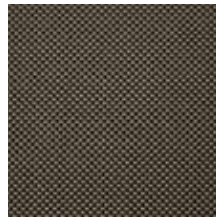
Taupe\*



Charcoal Sand\*



Cream



Chocolate Peach\*



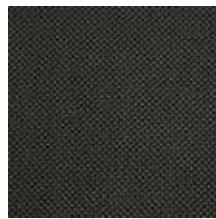
Espresso\*



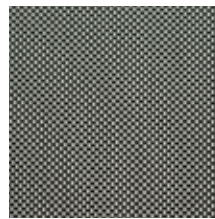
Silver Grey\*



Night\*



Basalt\*



White Liquorice\*



Black\*

Colours variations occur between digital and actual fabric colours.  
Request fabric samples prior to any purchase for colour clarity.

**A.W.S**

All Window Solutions Pty Ltd