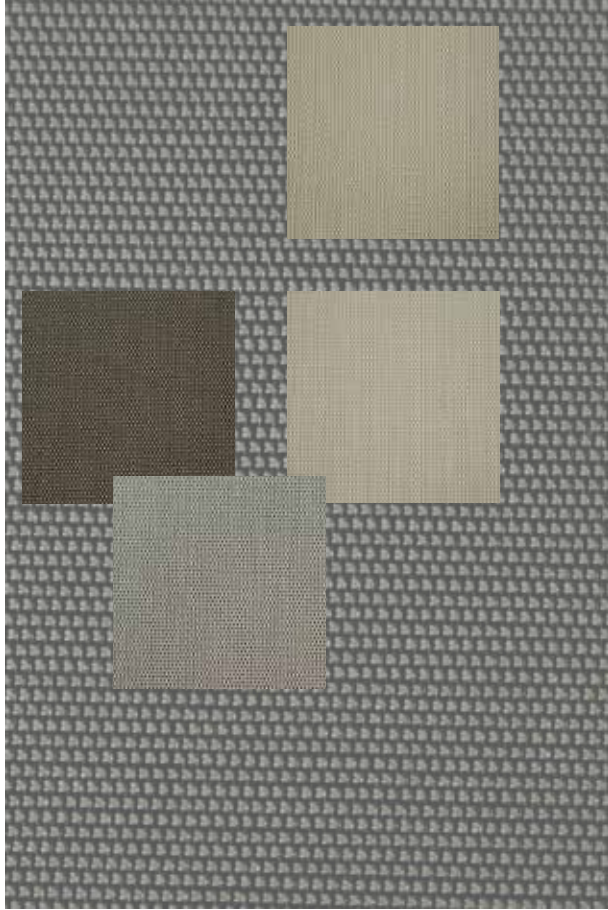


S-VIEW



Composition: 30% Polyester / 70% PVC

Width: 2500mm / 3000mm*

Openness Factor: 3%

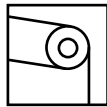
Weight: 420gsm

Thickness: 0.63mm +/- 5%

Colour Fastness: 7-8

Fire Classification: AS 1530.3 / NFPA701 / BS5867

Colours variations occur between digital and actual fabric colours.
Request fabric samples prior to any purchase for colour clarity.



Roller

Colour Range Represented on Following Page

A.W.S

All Window Solutions Pty Ltd

S-VIEW



Snow*



Desert*



Taupe*



Sand*



Canyon



Espresso*



Chocolate*



Linen*



Charcoal Sand*



Basalt*



Silver Grey*



White Licorice*



Black*

Colours variations occur between digital and actual fabric colours.
Request fabric samples prior to any purchase for colour clarity.

A.W.S

All Window Solutions Pty Ltd